



نسر الخليج للمقاولات

GULF EAGLE CONTRACTING CO.

(Your Professional Construction Partner)



Specialist in the fields of:

**Tower Building Construction
Residential & Commercial Projects
All Types of Military Camps
All types of Military Structures
Military Engineering
K-Span System
Super - Span System
Design & Planning
Protective Structures**

**Speed, Quality, Multi-Purposes, Modern Design, and efficiency are
the main advantage of the construction of Buildings of
Steel Arched Structures.**



The Company

Gulf Eagle Contracting (GEC), founded in the year 1994, a privately owned local establishment which has built a solid reputation for market excellence, drawing on a rich history and a strong heritage of quality, stability and innovative leadership in the market. We are one of the largest, "PRIVATE" Classification in Building Construction, MEP, Roads and Infrastructure, involved in a wide range of construction projects in the UAE.

In its early years GEC's operations were mainly geared to Military Projects, which varied from the construction of barracks, facilities, and officer's accommodation to infrastructure and external works for various military bases in UAE. Gradually GEC began to broaden its Client base and started to take on other projects for private Clients, such as commercial towers (offices & apartments), villa compounds and hotels.

Today, GEC is confident that its sound and progressive growth over the past eighteen years together with its recent restructuring puts it in a strong position to respond to the challenges of the current economic and construction upturn in the UAE.



Strengthening your foundations

Chairmans Message

Gulf Eagle Contracting, was formed in the year 1994, a leading Construction Company with solid expertise in the field of all types of Construction, operating in Abu Dhabi, and Al Ain, United Arab Emirates. The company has proven records of excellent performance and has demonstrated good workmanship with the Clients guaranteeing them quality of work for total customer satisfaction.

The company has been registered with various Government Departments, Private sector and executed tens of projects to its credit.

We look forward to have a good business relationship with all our valued clients and continue to provide an excellent working environment.

For Gulf Eagle Contracting

Ali Al Dhaheri
Managing Director



Quality Policy

Gulf Eagle Contracting, provides construction engineering solutions: Designs, Engineering, Procurement, Construction and Commissioning of Civil, Mechanical, Electrical and Instrumentation Projects, including Steel Structure, Piping Systems Fabrication and Installation for military, Commercial, Government and Private Clients.

It is the Company's policy to ensure that all projects are executed in accordance with contract specifications and drawings, within the contractual time frame, and in compliance with all legal requirements thus providing good value and satisfaction to our Clients.

This Quality policy will be a basis of our quality management system and shall provide a framework for setting and reviewing quality objectives and targets.

The quality management system adopted will comply with all applicable requirements of latest edition of ISO 9001 Quality Management Systems-Requirements.

The Company Management is committed to continuously improve the effectiveness of the quality management system by analyzing customer feedback, conducting internal audits, imparting training where necessary and review of the Quality Management System.

We believe that our clients, employees, suppliers / subcontractors and the society in general are important contributors in our business. This fact will be evenly considered in our overall business dealings.

The policy is applicable to all branches, divisions, sites and subcontractors. It will be displayed in offices and on all sites, and it is the responsibility of both the management and employees to be aware of this quality and the applicable company system relevant to one's area of work.

This policy will be reviewed for adequacy and effectiveness during the bi-annual management reviews.

The General Manager



Strengthening your foundations

Health & Safety Policy



Ensure the education, interest and awareness training of new employees in safe working methods before the assumption of duty.

Ensure that the organization is a safe place, and the environment, facilities, equipment and substances are subject to safe system of work to prevent risks to health or safety.

Promote personal responsibility and effort on the part of everyone to avoid and prevent health hazards and injuries to themselves and to others who may be affected by their acts or omissions and to co-operate with the organization to comply with its duties, requirements and statutory obligations.

Ensure that safety is a line management responsibility.

Monitor effectiveness of safety policy.

Display and publicize this statement and review it annually.





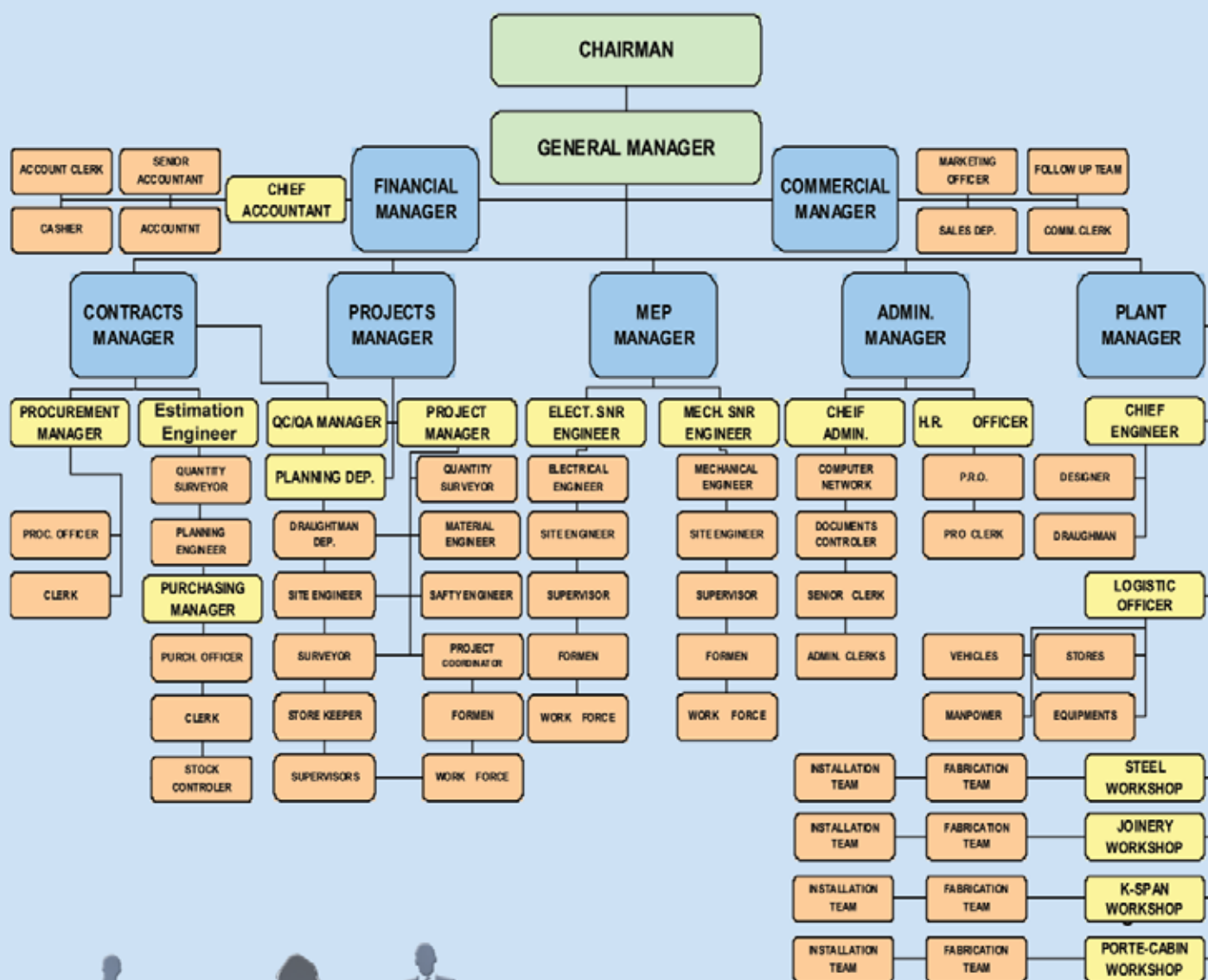
Mission & Vission

Gulf Eagle Contracting

to building excellence through partnership with our clients, consultants and the government by adhering to the highest quality and safety standards, delivering our projects on time and within budget. Our success has its roots in policies to invest continuously in innovation, technology, equipment and technical enhancement. We are dedicated to empowering our employees to provide them with rewarding careers and ensuring their growth. We are devoted to their safety, health, job security and family welfare.

Strengthening your foundations

GEC Organization





Current & Executed Projects

Gulf Eagle Contracting, embraces the vision of delivering modern constructed projects, based on inspiring and innovative designs.

Gulf Eagle Contracting, is efficient in high value, low cost concepts and ensuring a positive contribution to the individuals.

GEC, Professional Execution

We look forward to continue working with our valuable clients.

The more challenging tasks we accept

The more difficult situations we keenly face

The faster will be our growth

Strengthening your foundations

Legal Documentation

مركز أبوظبي للأعمال
Abu Dhabi Business Center

دائرة التنمية الاقتصادية
DEPARTMENT OF ECONOMIC DEVELOPMENT

Commercial License

رخصة تجارية

License No	: CN-1032502	: رقم الرخصة	
Unified ID for ADCCI	: 12636	: رقم الموحد لمعوية الغرفة	
Legal Form	: Establishment	: مؤسسة فردية	
		: الاسم التجاري	
Trade Name	: Gulf Eagle Contracting		
Issue Place	: Abu Dhabi	: مكان التأسيس	
Establishment Date	: 13/02/1994	: تاريخ تأسيس المنشأة	
Issue Date	: 19/12/2013	: تاريخ التأسيس	
Expiry Date	: 18/12/2014	: تاريخ الانتهاء	

Partner Type	Nationality	Description	No
مالك	الإمارات العربية المتحدة	علي محمد علي الهويدي الشامي	20000566
Owner	United Arab Emirates	Ali Mohamed Ali Alyabhouni Al Dhaheri	

Commercial Activities : الأنشطة التجارية :

1. Onshore And Offshore Oil And Gas Fields And Facilities Services /All Kind Building Projects Contracting - First Category /Metal construction contracting - First Category /Main Roads

2. Streets And Related Works Contracting - Fifth Category /Submain Sewerage Networks And Houses Connection Contracting - Fifth Category /Rain Water Drainage Contracting - Fifth Category

1. خدمات عمول ومنشآت النفط والغاز البرية والبحرية

2. مقاولات مشاريع البنى التحتية الأولى

3. مقاولات الإنشاءات المعدنية - الفئة الأولى

4. مقاولات الطرق الرئيسية و الشوارع والأحساء المتصلة بها - الفئة الخامسة

5. مقاولات شبكات الصرف الصحي الفرعية و توصيلات المنازل - الفئة الخامسة

6. مقاولات صرف مياه الأمطار - الفئة الخامسة

Address : جزيرة أبوظبي، شارع المورور، نافذة علي محمد عيث السويدي : العنوان

تشهد غرفة أبوظبي بموجب القانون رقم 27 لعام 2005 وبأن المنشأة المذكورة أعلاه قد سجلت لديها

Abu Dhabi Chamber certifies that the above mentioned establishment has been registered
In accordance with the Law No27 of 2005

وثيقة معتمدة ومذكورة بدون توقيع أي نظم من مملكة التنمية الاقتصادية - أبوظبي. للتأكد من صحة البيانات الواردة في الرخصة يرجى زيارة الموقع: <http://www.ded.abudhabi.ae>

Approved document issued without signature or stamp by the Department of Economic Development-Abu Dhabi. To verify the license kindly visit <http://www.ded.abudhabi.ae>

This Document is Considered As Commercial Register





غرفة أبوظبي
ABU DHABI CHAMBER

تعتبر هذه الوثيقة بمثابة سجل تجاري**



Projects Showcase

Residential Buildings



	Owner : Classified
	Consultant : Classified
	Location : Confidential
	Discription : Residential Tower

Strengthening your foundations

Our Projects

Residential & Commercial Buildings



Owner : Saeed Rashed Moh'd Al Neyadi

Consultant : Syrconsult Consulting Engineers

Location : Al Nahyan

Discription : Ground + 3 Basements + 12 Typical Floors



Our Projects

Residential & Commercial Buildings



Owner : Bhakhita Salem Al Mansouri

Consultant : Beirut Engineering Consultants

Location : Muroor Road, Abu Dhabi

Discription : 4 Basements, Mezzanine + 12 Typical Floors + Roof

Strengthening your foundations

Our Projects

Residential & Commercial Buildings



	Owner : Surour Hilal Al Kaabi
	Consultant : Adnan Saffarini
	Location : Al Nahyan
	Discription : Ground + 4 Basements + 12 Typical Floors



Our Projects

Residential & Commercial Buildings



Owner : Khalfan Al Mazroui

Consultant : Beirut Engineering

Location : Musaffah

Discription : Ground + Mezannine + 7 Typical Floors

Strengthening your foundations

Our Projects

Residential & Commercial Buildings



	Owner : Private
	Consultant : Private
	Location : Classified
	Discription : Residential Tower



Strength & Stability

Priorities

Values of GEC

Strength and Stability

Acquisition . Examination of the firm's current management structure reveals the continued dedication to people. Staff continues to be developed and promoted from within, and their average years with the firm set industry standards. This is why GEC has perennially climbed up the list of top domestic general building contractors and has done so purely through growth.

Service delivery

GEC provides clients with a wide range of construction delivery system options. Our project management personnel are thoroughly cross-trained in all construction-related services. They can be called upon at any stage of a project to deliver valuable decision-making input. Each of the options shown represents a significant portion of the work completed by our firm over the past 18 years.

Philosophy

Since its inception, Gulf Eagle Contracting has aimed to provide the highest levels of service quality related to the Design and Construction services it provides.

In order to achieve and maintain this goal, Gulf Eagle Contracting is committed to:

- Comply with ISO 9001:2000 Quality Management System, legal, regulatory & other applicable requirements in UAE, continually improve our applied QMS and each and every aspect of Gulf Eagle Contracting activities.
- Gain & maintain our customer satisfaction by providing services which meet customer contractual requirements, specifications and the timeframes set forth.
- Establish, maintain and continually review our stated policy, objectives and targets.

Scope of work

Gulf Eagle Contracting has developed and implemented a Quality Management System to satisfy the needs of its customers, comply with applicable laws and regulations and improve the quality management of the company. The quality management system complies with the requirements of the international standard ISO 9001:2000. It covers quality-related activities of the concerned departments or areas.

QMS demonstrates Gulf Eagle Contracting ability to consistently provide service (construction, electromechanical & steel structure services) that meets or exceeds the customer and applicable regulatory (if any) requirements. In addition to this, it also aims to enhance customer satisfaction through the effective application of the system, including processes for continual improvement of the system and the assurance of conformity to customer and applicable regulatory requirements.

Strengthening your foundations

Villa Compounds

Residential & Commercial Projects



	Owner : Mrs. Shamma Al Mazroui
	Consultant : Alan Durand Architects
	Location : Khalifa City A
	Discription : Commercial Villas (Compound)

Residential & Commercial Villas Abu Dhabi

"Gulf Eagle offering value added services and setting quality standards in the construction industry"



Residential Villas...

Built for Luxury Living



Owner : Ali Al Hashemi

Consultant : Beirut Engineering Consultants

Location : Khalifa City A

Discription : Villa Compound



Strengthening your foundations

Villa Compounds

Owner : Ali Al Hashemi

Consultant : Beirut Engineering Consultants

Location : Khalifa City A

Discription : Villa Compound

Dedication

Gulf Eagle Contracting, recognizes its human capital for its solid reputation in the UAE, and its prestigious list of clients.

With the main rule of conduct since our inception to remain cost - efficient and reliable.



Residential



Our Professional Experience

Governmental

Commercial

Retail

Residential

Corporate & Institutional

Educational

Mixed Use

Sports

Industrial

Heritage, Cultural & Religious

Military

Special Assignments

Strengthening your foundations

Villa Compounds



Owner : Al Hashemi

Consultant : Beirut Engineering Consultants

Location : Khalifa City

Description : Residential Villa Compound

Our Values

- Integrity
- Customer satisfaction
- Building partnerships
- Ethical and professional constructional services
- Sustained efforts to enhance customer value and quality construction



Residentials



Strategic Planning

For a Safe Environment

Gulf Eagle Contracting, has the capability to adapt and respond quickly to rapid and rigorous market demands. Infrastructure was certainly an important catalyst towards creating the sort of development that aimed to improve life for all UAE citizens and we are playing a role in spearheading the change of the landscape of the UAE.

Strengthening your foundations

Villa Compounds

Residential & Commercial Projects



Owner : Private

Consultant : Private

Location : Confidential

Discription : Villa Compound



Residentials

Luxury to its maximum comfort

Strengthening your foundations



Owner : Private

Consultant : Private

Location : Confidential

Discription : Confidential

Luxury Villas

Luxury built for comfortable living





Luxury Interiors



■	Owner : VIP
■	Consultant : Private
■	Location : Private
■	Discription : Luxury Villa project

Specialized Construction

By offering a such a broad range of specific professional services it becomes possible to provide more depth to the firm's approach to construction management, thus ensuring maximum quality, continuity and efficiency in the execution of any projects mandate.

Strengthening your foundations

Steel Structure Buildings

Steel Structure Buildings

Super Span Hangers

Roofing

GI Coil with insulation

Aluminium Sandwich Panels

with Concrete Foundations / Slabs





Steel Buildings



Strengthening your foundations

Porta Cabins

Mobile Houses (Caravans)

Suitable for any application

Modular Concept

Fire Rated Materials

Thermal Resistant (R) Values

Long term investment





Mobile Houses



Strengthening your foundations

Defence Construction

K-Span System
Super - Span System
Military Engineering
Design & Planning
Protective Structures





Military & Private



K-Span Construction System

FAST, DURABLE

LOW COST

ON SITE CONSTRUCTION

WITHOUT ANY TRUSSES

100% WATER PROOF

SIMPLE & VERSATILE



Strengthening your foundations

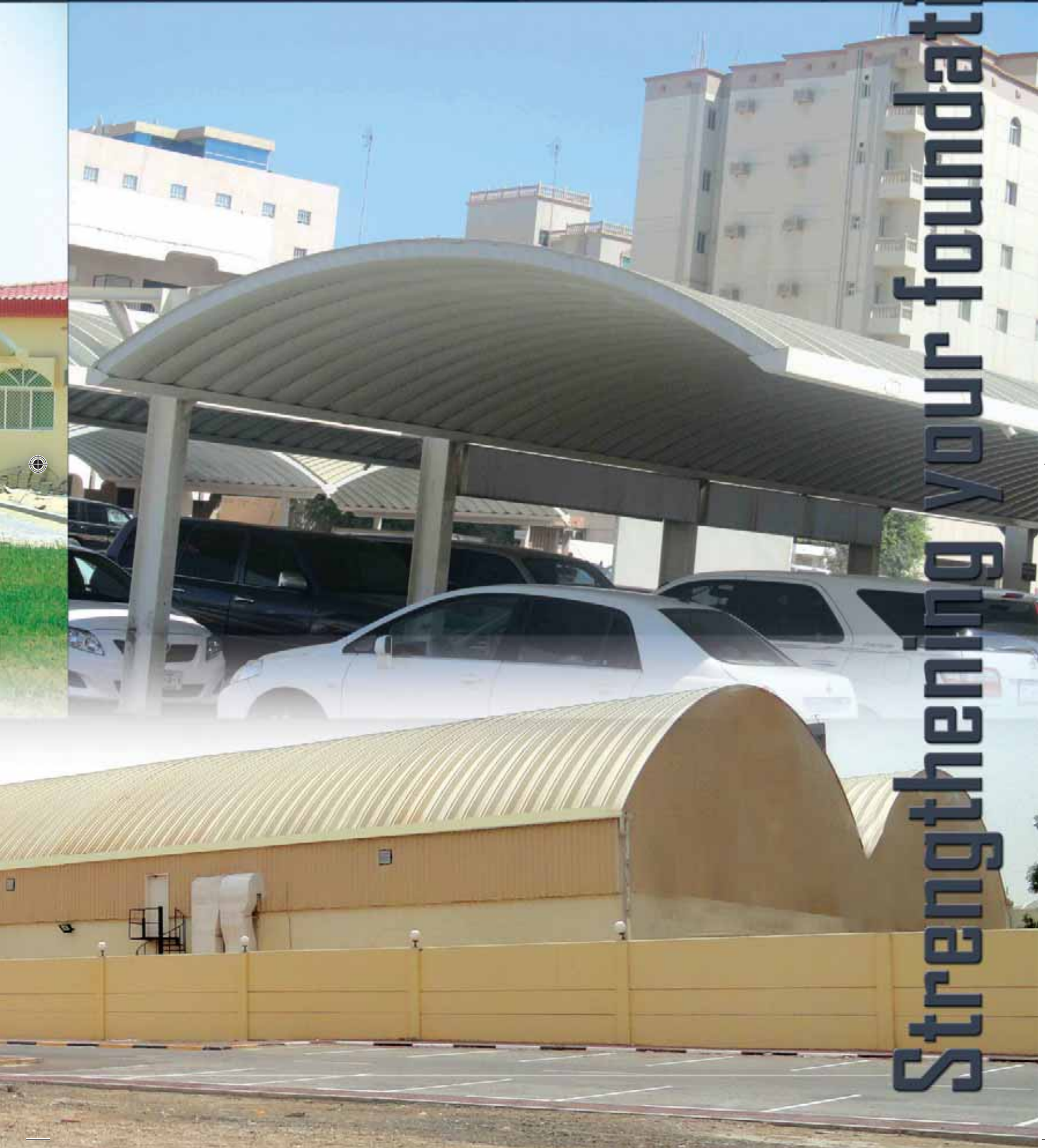
K-Span Car Sheds

Abu Dhabi



K-Span warehouses

Strengthening your foundations



Carpentry (In House)

Carpentry work Shop (A very large Facility)
For all types of projects, Big or Small





In House Carpentry Facility (Musaffah, Abu Dhabi)

With a capacity to handle any type of
Mega or small project...



Strengthening your foundations

Projects

Completed & On Going

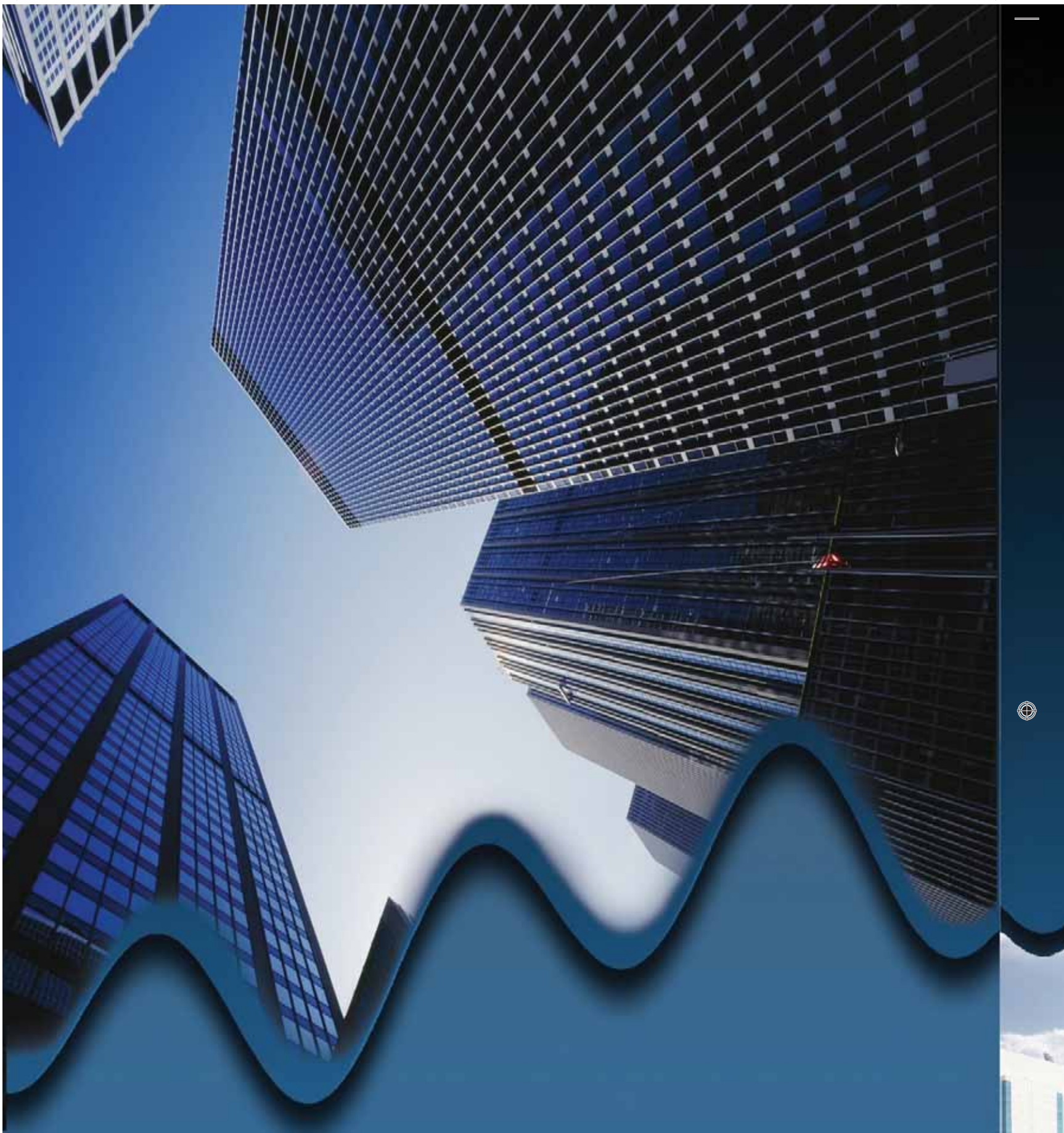
PROJECT NO.	YEAR	PROJECT TITLE	LOCATION	CLIENT	CONSULTANT	VALUE
MW-AF-298-2003	2007	Military Facilities (1,2) for Air Force	AL NABAA	CMW	Directorate of Military Works	34,447,060.00
MW-IS-486-2003	2007	Military Facilities for Shooting Ranges in ZMC	SWEIHAN	CMW	Directorate of Military Works	2,640,000.00
MW-SO-082-2003	2007	Military Facilities of Officer's and OR'S Accommodation	THOUBAN	CMW	Directorate of Military Works	35,000,000.00
MW-OU-298-2005	2007	Construction Of Fending For Armed Forces		CMW	Directorate of Military Works	5,000,000.00
MW-LF-104-2003	2006	Construction Of Swimming Pools for Armed Forces		CMW	Directorate of Military Works	2,450,000.00
MW-SO-306-2003	2006	Military Facilities Of Hangers, Gates and Road for SOC	SAS AL NAKHEEL	CMW	Directorate of Military Works	19,785,500.00
MW-SO-297-2003	2006	Const. of Electronic Outdoor Shooting Range for SOC	SAS AL NAKHEEL	CMW	Directorate of Military Works	14,580,000.00
MW-IS-025-2005	2005	Military Facilities of hangers & K-Span Sheds for DIMS		CMW	Directorate of Military Works	4,850,458.00
MW-AF-115-2003	2005	Military Facilities of Aircraft Hangers at Al Dhafra Airbase	AL DHAFRA	CMW	Directorate of Military Works	3,900,000.00
MW-SO-083-2001	2005	Military Facilities of Tyre House Building, SOC School	AL AIN	CMW	Directorate of Military Works	2,402,225.00
MW-LF-397-2002	2005	Military Facilities of Simulator Building for Artillery School	AL TAWAILA	CMW	Directorate of Military Works	2,450,000.00
MW-SO-017-2002	2005	Military Facilities of Squadron Camp for SOC H.Q	ARZANA ISLAND	CMW	Directorate of Military Works	8,343,780.00
MW-LF-201-2001	2005	Const. 2 Olympic Swimming Pools at Falah & Hail Camp	NORTH EMIRATES	CMW	Directorate of Military Works	6,300,000.00
MW-OU-041-2002	2005	Military Facilities for Southern Sector Border Guards		CMW	Directorate of Military Works	14,500,000.00
MW-SO-307-2003	2005	Military Facilities of Squadron Camp, SOC Al Minhad AB	MINHAD	CMW	Directorate of Military Works	20,000,000.00
MW-OU-087-2003	2005	Const. of Ammunition Factory For ADCOM Manufacturing	SWEIHAN	CMW	Directorate of Military Works	4,850,000.00
MW-OU-366-2003	2005	Construction Of 6 Nos. Chalet At Al Ain	AL AIN	CMW	Directorate of Military Works	3,432,845.00
PR-800	2005	Construction of 3 Storey Villa and Landscape	AL AIN	ALI AL DHAHERI	DEC	11,670,000.00
PR-1000	2005	Construction of Offices Building, Stores & Workshops	ICAD	ADCOM	DEC	14,500,000.00
PR-900	2005	Construction Of Offices, Plant, Workshops, Stores	ICAD	GEIMP	DEC	12,900,000.00
WATHBA	2005	Construction of 1000 Animal Sheds for Public Works Dep.	AL WATHBA	PWD	Directorate of Military Works	7,485,000.00
MW-IS-192-2003	2004	Constructions of Hangers at Special Forces at ZMC	SWEIHAN	CMW	Directorate of Military Works	10,420,000.00
MW-SO-268-2003	2004	Competition Hall and Obstacle Field at HQ. SOC	SWEIHAN	CMW	Directorate of Military Works	2,403,800.00
MW-SO-243-2003	2004	Military Facilities for Special Operations Commandor	SAS AL NAKHEEL	CMW	Directorate of Military Works	3,000,000.00
MW-SO-2128-03	2004	Construction of Buildings for the Support Regiment	SAS AL NAKHEEL	CMW	Directorate of Military Works	54,000,000.00
MW-SO-2198-03	2004	Construction Of Shooting Ranges For SOC	SAS AL NAKHEEL	CMW	Directorate of Military Works	9,875,254.00
MW-SO-389-2002	2004	Const. of Special Operation Squadron - Naval Base		CMW	Directorate of Military Works	8,400,000.00
MW-1116,1892	2003	Fabrication & Construction of K-Span Sheds & Hangers	VARIOUS	CMW	Directorate of Military Works	40,800,000.00
MW-2056	2003	Construction Of Technical School For Armed Forces		CMW	Directorate of Military Works	7,895,000.00
MW-3102	2003	Fabrication, Const. of K-Span Sheds for Border Guard	VARIOUS	CMW	Directorate of Military Works	2,785,000.00
PROJECT NO.	YEAR	PROJECT TITLE	LOCATION	CLIENT	CONSULTANT	VALUE
MW-RG-109-2001	2003	Construction of Sheds for Military Vehicles/ORS for RG	NADD AL SHIBA	CMW	Directorate of Military Works	2,410,000.00
MW-3096	2003	Fabrication & Construction of K-Span Sheds & Hangers	DENA ISLAND	CMW	Directorate of Military Works	4,555,000.00
MW-SO-347-2001	2003	Military Facilities for Indoor Shooting Range	SAS AL NAKHEEL	CMW	Directorate of Military Works	2,505,391.00
PR-900	2003	Construction Of Ware House for GATS at Int'l Airport	ABU DHABI	CMW	Directorate of Military Works	9,800,000.00
MW-2281	2002	Construction of Clinic and Signal Building at Thouban	THOUBAN	CMW	Directorate of Military Works	3,451,000.00
MW-2209	2002	Construction Of Shooting Ranges at Al Manama	AL MANAMA	CMW	Directorate of Military Works	4,984,000.00
MW-SO-021-2001	2002	Maintenance and Renovations for Fighting Training Camp	THOUBAN	CMW	Directorate of Military Works	4,000,000.00
MW-OU-018-2001	2002	Military Facilities & Hanger at Zayed Military Cantonment	SWEIHAN	CMW	Directorate of Military Works	1,546,000.00
MW-SO-133-2001	2002	Construction Of Electronic Shooting Range System	SWEIHAN	CMW	Directorate of Military Works	3,850,000.00
MW-OU-2270-01	2002	Construction of Lectures Hall and Sheds for SOC - HQ	SAS AL NAKHEEL	CMW	Directorate of Military Works	1,850,000.00
MW-RG-286-2001	2002	Construction of K- Span for Mechanised Infantry Regiment	RAS AL KHAIMA	CMW	Directorate of Military Works	2,450,000.00
MW-SO-175-2001	2002	Military Facilities Of Hangers, Gates and Road for SOC	SAS AL NAKHEEL	CMW	Directorate of Military Works	1,795,000.00

Projects List



Completed & On Going

PROJECT NO.	YEAR	PROJECT TITLE	LOCATION	CLIENT	CONSULTANT	VALUE
ADCOM	2014	New Facility Extension for ADCOM Military Industries	Musaffah ICAD	ADCOM	Mass Consultants	Dhs. 34,585,000
ADNOC	2013	Sup. Deli. and Inst'n of Mob. Camp & Fly Offices for NDC	Habshan	ADNOC / NDC	ADNOC	Dhs. 108,000,00
CNIA	2013	Construction of Stores and Car Sheds	All over UAE	CNIA	CNIA	Dhs. 4,000,000
CMW-12022-M-001	2012	2 Years Contract for making Stores and Sheds all over UAE	All over UAE	CMW	CMW	Dhs. 59,000,000
PGC-Mushrif	2012	2 Years Maint. Contract for all the works at Mushrif Palace	Mushrif Palace	PGC	PGC	Dhs. 4,000,000
PGC-Sea Palace	2012	2 Years Maintenance Contract for all the works at Sea Palace	Sea Palace	PGC	PGC	Dhs. 2,000,000
PGC-AI Maqam	2012	2Years Maint. Contract for all the Works at AI Maqam Palace	AI Maqam Palace	PGC	PGC	Dhs. 2,000,000
PGC-Mahawi	2012	2Years Maintenance Contract for all the works at Mahawi	Mahawi	PGC	PGC	Dhs. 2,000,000
PGC-RAK	2012	2Years Maintenance Contract for all the works at RAK	Ras Al Khaimah	PGC	PGC	Dhs. 2,000,000
PROJECT NO.	YEAR	PROJECT TITLE	LOCATION	CLIENT	CONSULTANT	VALUE
PR-1055	2011	New H.Q. Showroom, Factory Extension and Facilities	ABU DHABI	ADCOM	MASS CONSULTING	15,850,000.00
MW-CG-096-2009	2010	Military Facilities	FUJAIRAH	CMW	Directorate of Military Works	2,900,000.00
1040	2011	Commercial Building Furnished Apartmentats Tower	ABU DHABI	Saeed Al-Neyadi	Syroconsultant. Conslt. Eng.	69,500,000.00
1040	2011	Commercial Building Residential Tower	ABU DHABI	Salem Al-Kaabi	Adnan Saffarini Eng. Cons.	67,000,000.00
1034	2011	Queens Palace Hotel Tower	ABU DHABI	Bekheta Al Mansouri	Beirut Eng. Conslt. Bureau	54,950,000.00
MW-AF-051-2007	2011	Military Facilities and Hangers in Safran Air Base	LIWA	CMW	Stanley Consultants	35,000,000.00
CNIA- 3000	2010	Military Facilities and Hangers	VARIOUS	CNIA	Directorate of Military Works	12,150,000.00
MW-LF-042-2009	2010	Military Facilities & Workshop for Tank Regiments at ZMC	SWEIHAN	CMW	Directorate of Military Works	29,600,000.00
MW-OU-261-2009	2010	Military Facilities and Offices Building	THOUBAN	CMW	Directorate of Military Works	7,600,000.00
MW-AF-096-2009	2010	Military Facilities in Safran Air Base	LIWA	CMW	Directorate of Military Works	2,150,000.00
MW-LF-379-2007	2009	Military Facilities for Infantry School at ZMC	SWEIHAN	CMW	Directorate of Military Works	33,253,358.00
MW-OU-327-2005	2009	Military Facilities & Camp for Border Guards Group	UMM ASHTAN	CMW	Directorate of Military Works	24,264,319.00
MW-OU-328-2005	2010	Military Facilities. Camp for Border Guards Group	Mehdar Maqeena	CMW	Directorate of Military Works	21,111,875.00
MW-AF-522-2004	2010	Military Facilities at Al Nabah - Phase 2	ARZANA ISLAND	CMW	Directorate of Military Works	16,501,267.00
PR- 1035	2010	Commercial Residential Building	MUSAFFAH	Khalfan Al Mansouri	Beirut Eng. Conslt. Bureau	14,596,000.00
MW-AF-521-2004	2009	Military Facilities of Al Nabah Project Phase 2	SIR BUNAIR		Directorate of Military Works	14,106,238.00
PV- 2022	2010	Construction of Villas Compound of 6 units	ABU DHABI	Shamma Al-Mazroui	Alain Durand - Henriot	13,400,000.00
MW-OU-109-2006	2009	Military Facilities of Light Arm Shooting Ranges	AL-AIN	CMW	Directorate of Military Works	11,265,358.00
MW-RC-020-2006	2009	Military Facilities of Shooting Range	SBK AL HAFAR	CMW	Directorate of Military Works	22,775,300.00
PV- 2021	2009	Construction of Villas compound of 14 units	ABU DHABI	Ibraheem Al-Hashmi	Beirut Eng. Conslt. Bureau	18,382,000.00
MW-AF-128-2007	2009	Military Facilities Stores at Safran Air Base	LIWA	CMW	Stanley Consultants	10,658,679.00
MW-OU-131-2007	2009	Military Facilities of Infantry School	MINA ZAYED	CMW	Directorate of Military Works	8,577,600.00
PV- 2020	2009	Construction of Villas compound of 6 units	ABU DHABI	A Raheem Al-Hashmi	Beirut Eng. Conslt. Bureau	7,080,000.00
MW-AF-076-2006	2009	Military Facilities and Radar Steel Towers for Air Force	AL NABAA	CMW	Directorate of Military Works	2,951,720.00
MW-SO-519-2007	2009	Military Facilities and Stores	MAHWI	CMW	Directorate of Military Works	2,626,450.00
MW-OU-453-2007	2009	Military Facilities for Gayathi School	GAYATHI	CMW	Directorate of Military Works	1,050,000.00
PR-1030	2008	Military Facilities of Steel Structure hangers & Service BLD	MUSAFFAH	MOPA	Min. of Presidential Affairs	17,974,941.00
PR-1021	2008	Military Facilities and Stores Hangers	RAS DHARA	CMW	International Eng. Center	13,900,000.00



Abu Dhabi Office : P.O. Box : 31814
Tel. 00971 2 4491300
Fax. 00971 2 4448858
E-mail : gecgulf@eim.ae



ICAD Factory :
Tel. 00971 2 5500860
Fax. 00971 2 5500861
E-mail : plant @gecgulf.ae